

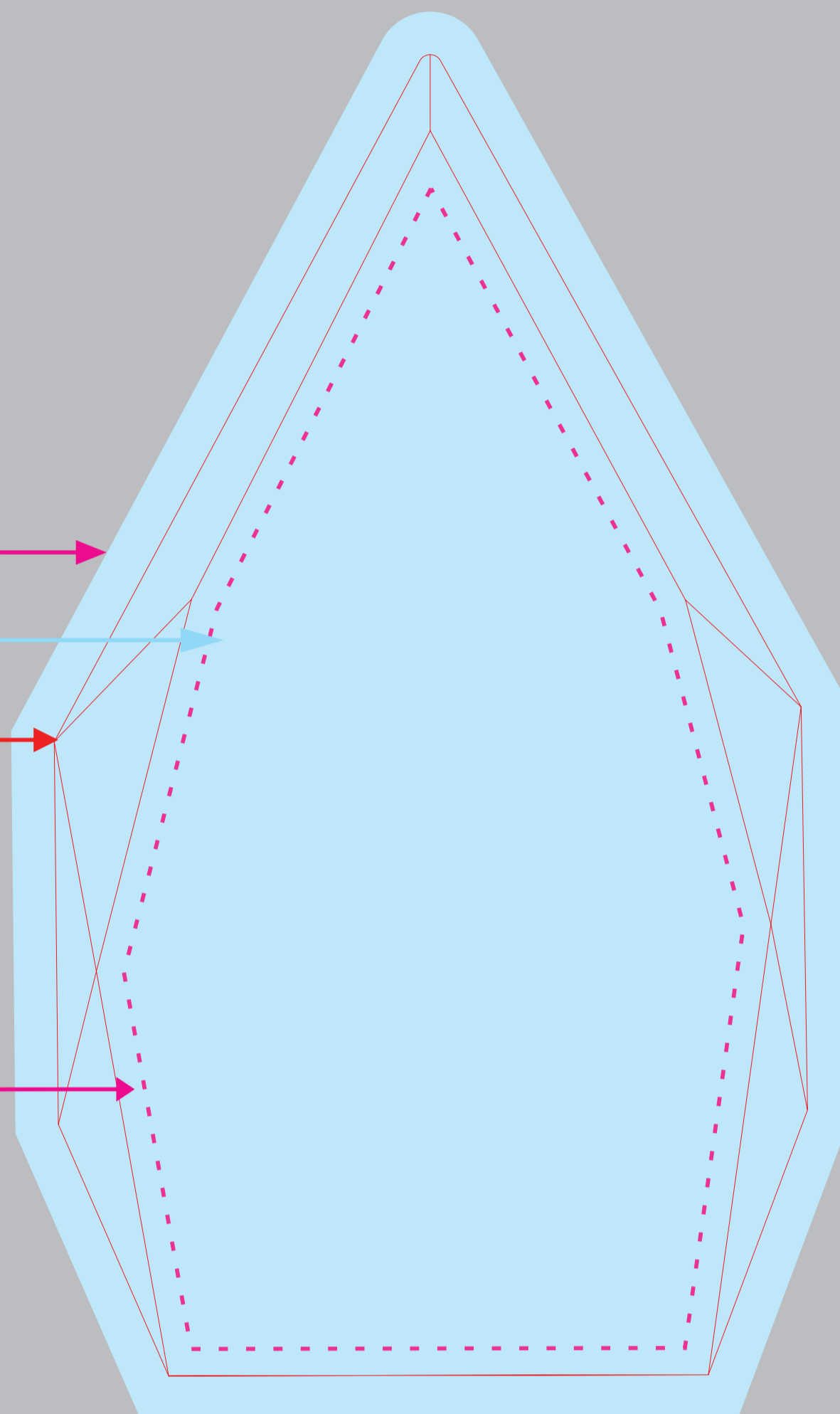
LUXORJET

1. White colour as a background on the whole surface of the glass trophy
2. White colour as a background under the colour pixels
3. Slightly transparent colour print (without a white colour)

Tips when preparing the artwork by yourself

LUXORJET
if the coloured background has to reach the edge of the glass, extend it beyond the outline of the glass 8 mm on each side
minimum resolution for illustrations or photos 300 dpi
external outline of the glass - TEMPLATE please do not change the color and thickness of the line
all fonts converted to curves
smallest font used 8 pt
minimum thickness of lines used in the design 0.2 mm

an area where essential elements should be placed, i.e. text, logo, etc.



C073

ENGRAVING

Tips when preparing the artwork by yourself

external outline of the glass - TEMPLATE please do not change the color and thickness of the line
all fonts converted to curves
smallest font used 8 pt
minimum thickness of lines used in the design 0.2 mm
laser engraving area
we only use vector objects (inscriptions, logos, characters)
the pattern for engraving will be prepared in grey using 70 % black in C M Y K scale
when filling with paint, please specify colour (paint palette in separate file)
ENGRAVING
! Because of manual processing of the glass trophies, template may slightly differ from the final product.



C073